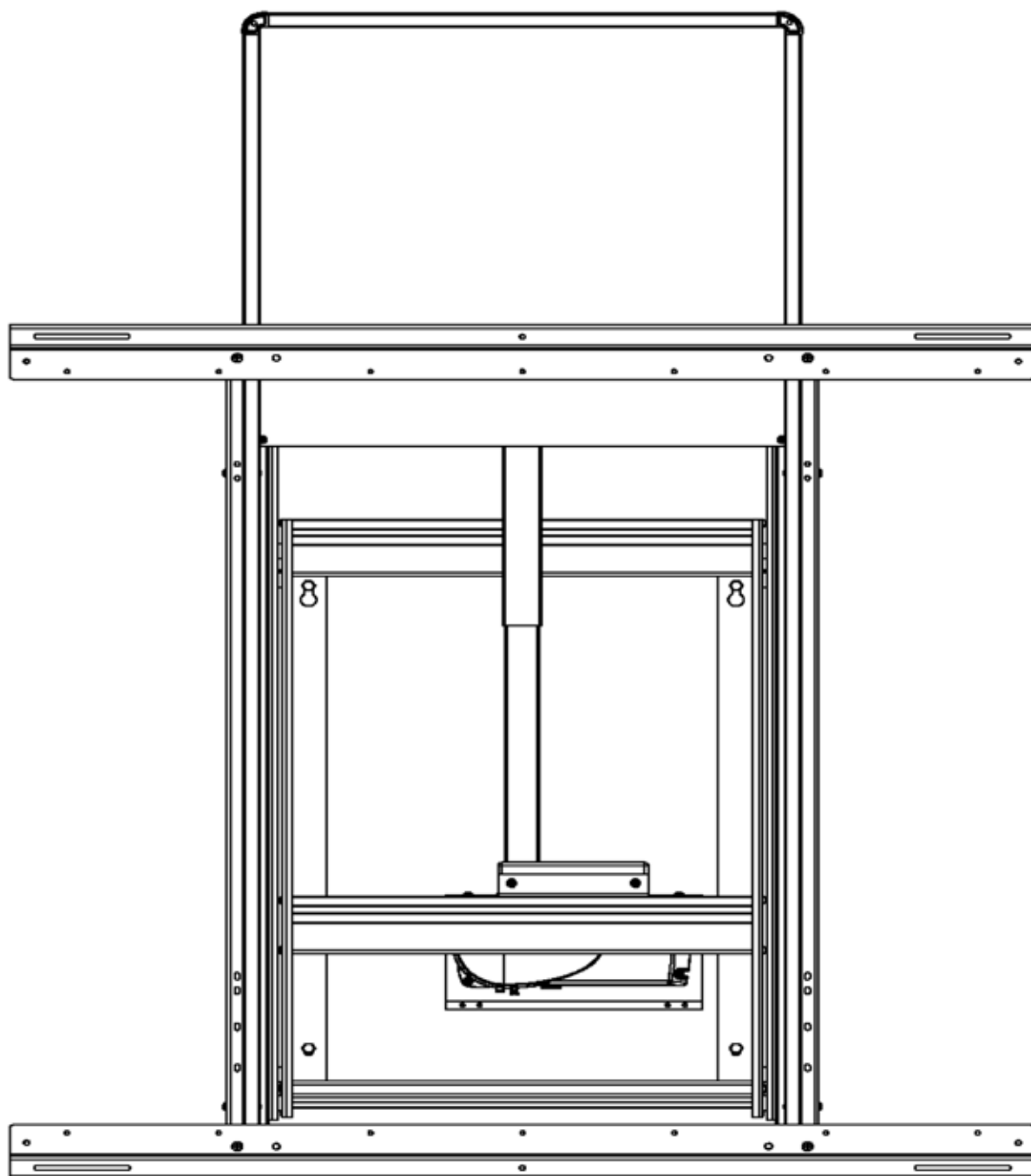


i3HAWM^E(BASIC)

MOUNTING INSTRUCTIONS



1. INDEX

1.	Index	3
2.	Important safety instructions	4
3.	Maximum loads	7
4.	Different configuraties	8
5.	Part list i3HAWM-E (basic)	9
6.	Preparing frame	10
7.	Installation on wall	12
8.	Installation i3BOARD	15
9.	Installation SMART BOARD	25

2. IMPORTANT SAFETY INSTRUCTIONS:

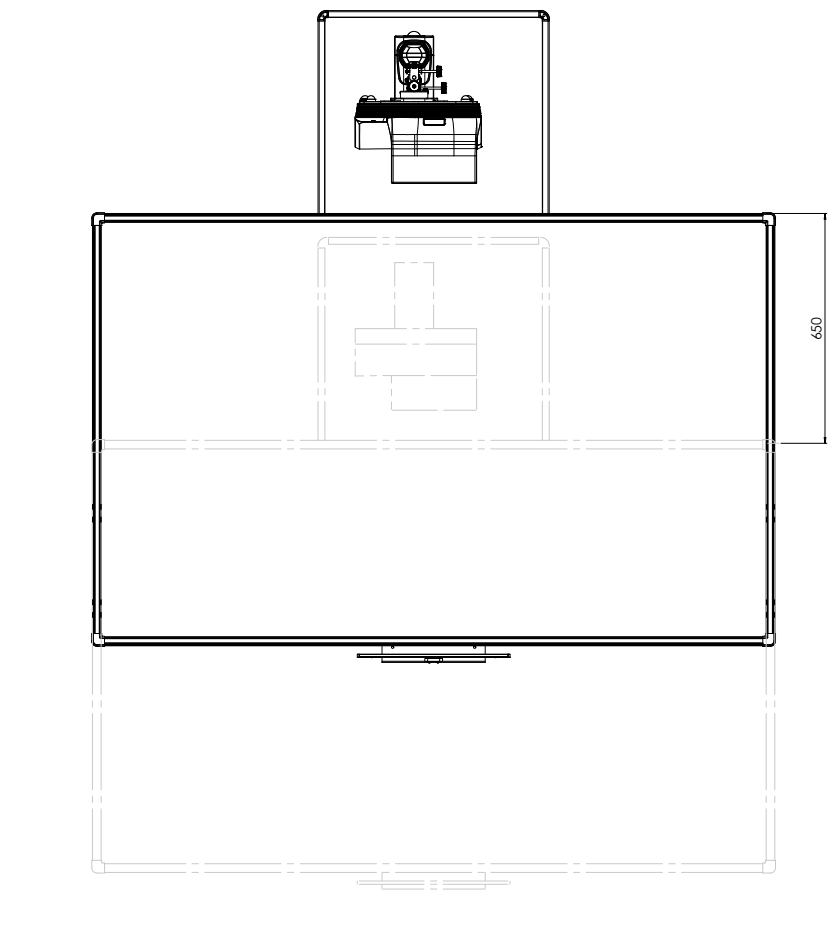
➔ **Instruct all users of the board!**

**Never place any object
under the board**



For safety reasons ,the board must be able to reach its lowest position at all times.

Note that when the i3HAWM-E (Basic) system re-initialises itself,it will run all the way down to its lowest possible position.



➔ **"Safety settings"**

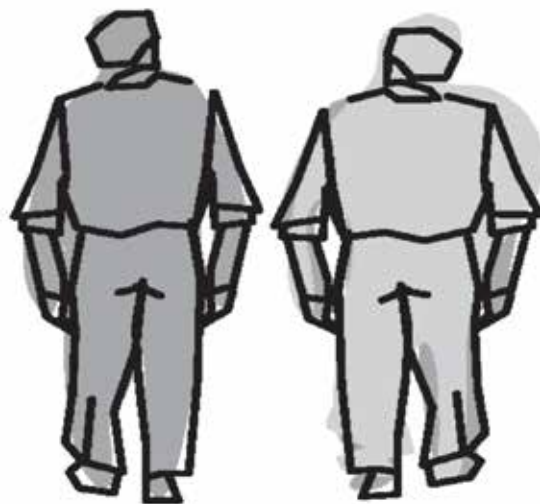
Refer to the document "Safety instructions" to set "anti-collision","stroke-length" and "initialisation time" of the system.

➔ Installation

This installation is intended to be executed by qualified personnel only. 2 persons are needed to do the job.

Depending on local circumstances (wall conditions etc), it may be necessary to substitute the supplied "general purpose" hardware.

Installers must be familiar with mechanical construction and electronic installations.

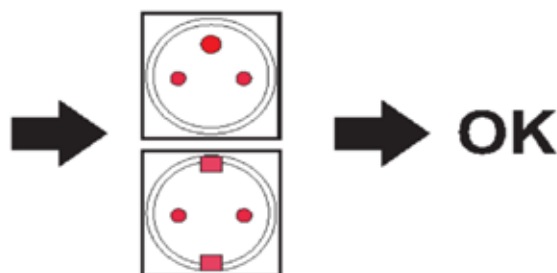


➔ Check this first!

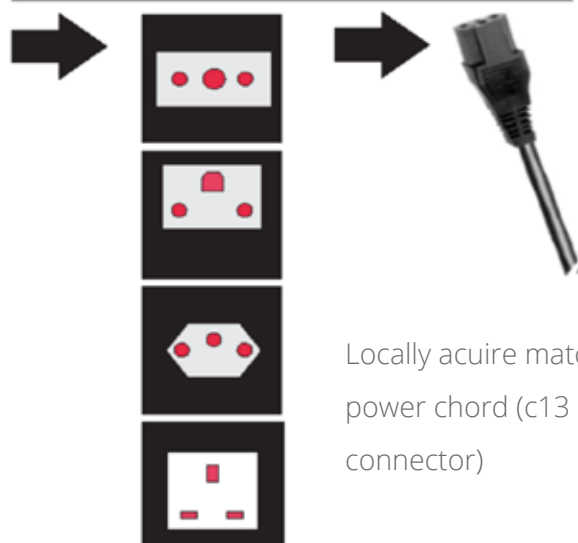
115V



STOP !



230V



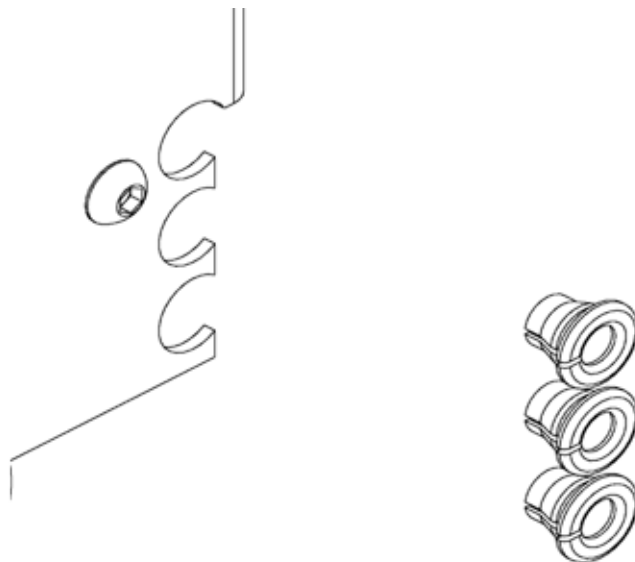
Locally acquire matching power chord (c13 or c14 connector)

➔ Cable management

Secure the cables to frame with cable ties , allow a cable loop of >650mm.

Protect cables with rubber sleeves.

Make sure all cables enter/exit the frame through the cable guide openings.



➔ Users

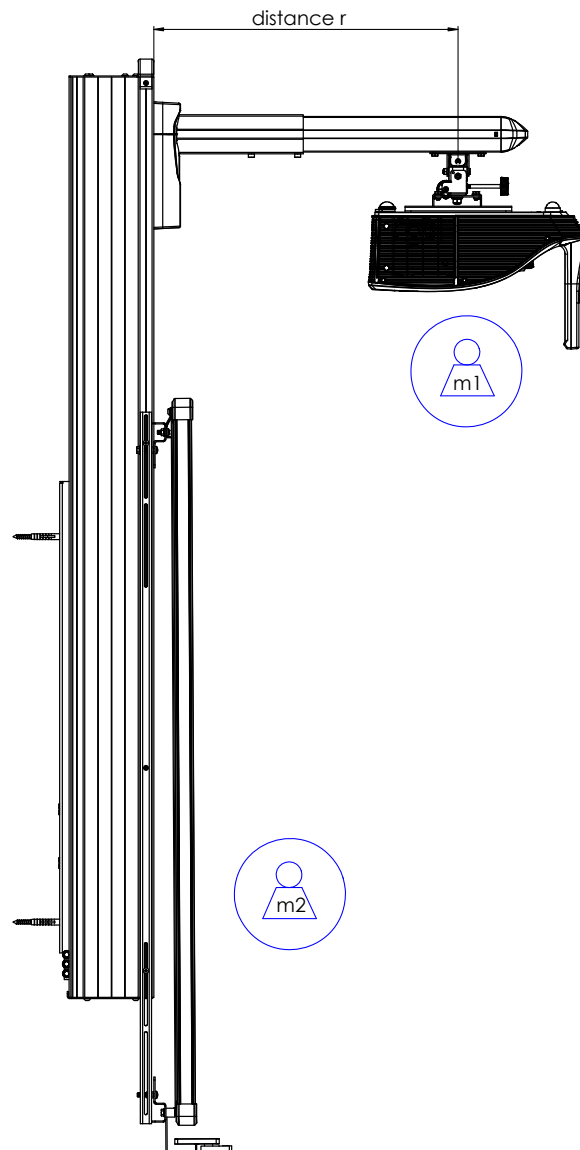
Install the projector by following the installation guide of the projector

This device is not intended to be used by persons (including children) with physical ,sensory or mental disabilities or lack of experience and/or knowledge,unless, they are supervised or received instructions on how to use the device.

Children should be supervised to ensure that they do not play with the device

Please keep this manual for later reference.

3. MAXIMUM LOADS



Usage: duty cycle 10% 6min per hour or 2 min continuous at full load.

Actuator	1200 N	
Range (adjustable)	650 mm	
Power supply	230 V/50Hz	
r max.	1200 mm	
m1 (r<600mm)	max. 15 kg	max. 33 lbs
m1 (r>600mm)	max. 12 kg	max. 26 lbs
m2	max. 80 kg	max. 176 lbs
m1 + m2	max. 95 kg	max. 209 lbs*
*in case of Piëzo actuator	max. 55 kg	max. 121 lbs

4. DIFFERENT CONFIGURATIONS

➔ See drilling instructions that can be downloaded from

<http://www.i3-learning.com/i3hawm-templates>

5. PART LIST

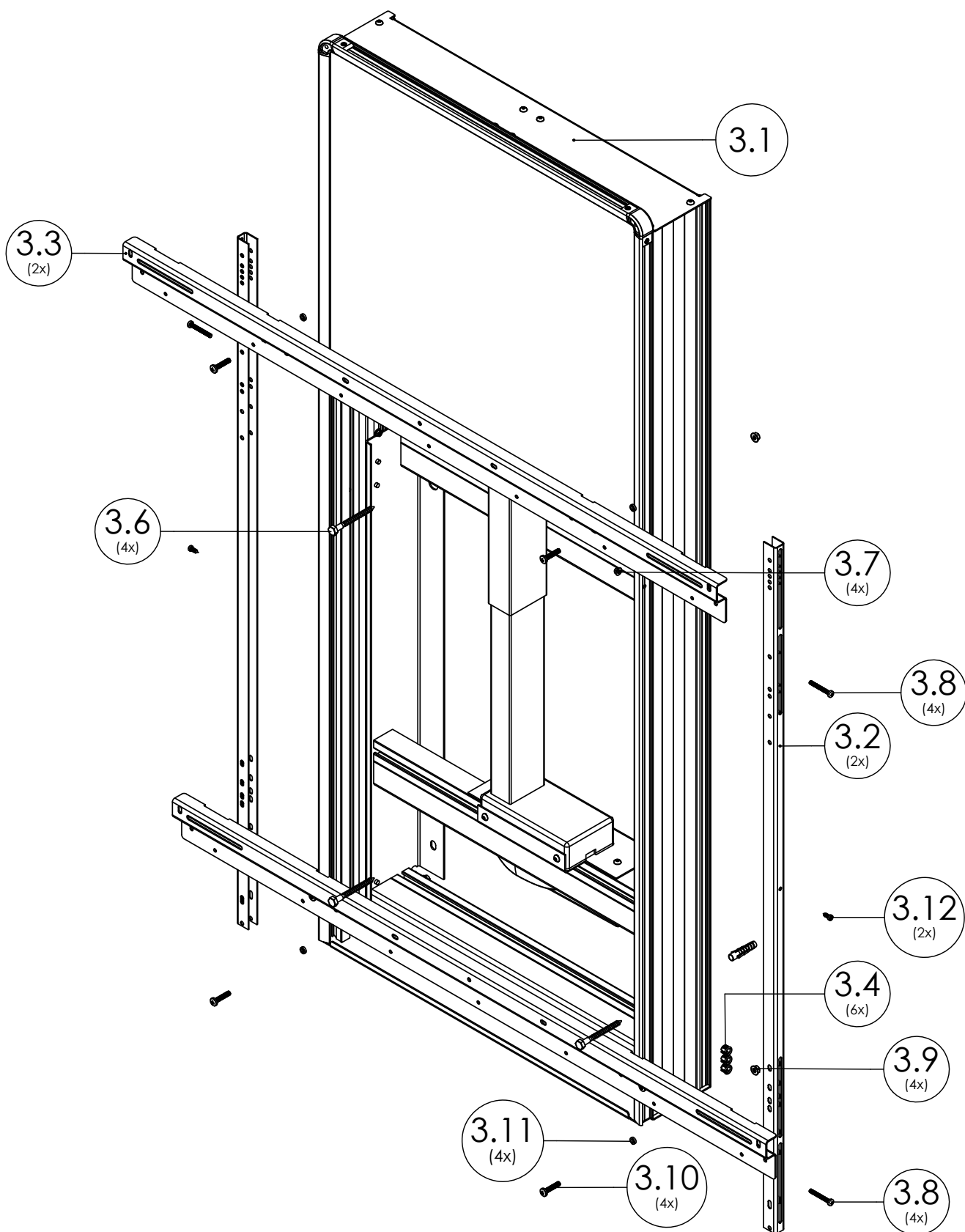
i3HAWM-E (Basic)

Part List

Id	V G Number	Q	Description	info
3.1	BS/A44200X	1	Frame RAL7021	
3.2	BS/L45100X	2	Vertical support adapter profile	
3.3	BS/L45200X	2	Horizontal support adapter profile	
		1	Power cable	

Hardware Bag/List (BS/A446011 - frame i3HAWM-E Basic) (1/5)

Id	V G Number	Q	Description	info
3.4	22/050783	6	Cable protection	
3.5	23/040332	4	Plug 10	
3.6	23/040188	4	Lag bolt hex head 8x80	
3.7	23/090273	4	Flange nut M5	
3.8	23/040440	4	Screw pan head cross M5x40	
3.9	23/090275	4	Flange nut M6	
3.10	23/040358	4	Screw pan head cross M6x30	
3.11	07/050546	4	Anti loss washer	
	23/040302	2	Plug 6x30	fixation control cable
	23/040179	2	Screw countersunk head cross 4x40	fixation control cable
	00/080004	4	Cable tie	fixation cables
3.12	23/090411	2	Self drilling screw 4,2 x 32	



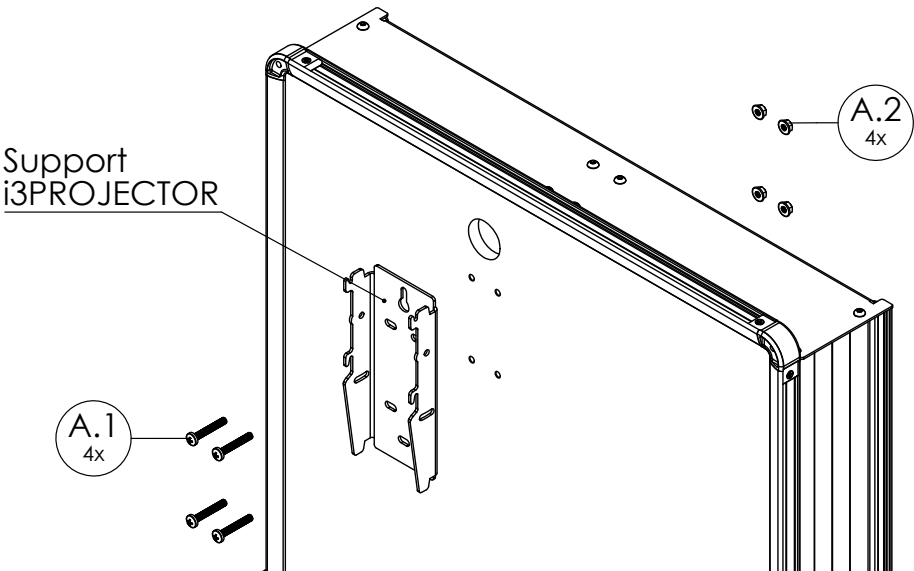
6. PREPARING FRAME

- Place the frame horizontally
- Drill the holes in the upperplate, (checklist configurations) using the appropriate template
- Pre-install all the cables (power,VGA etc)

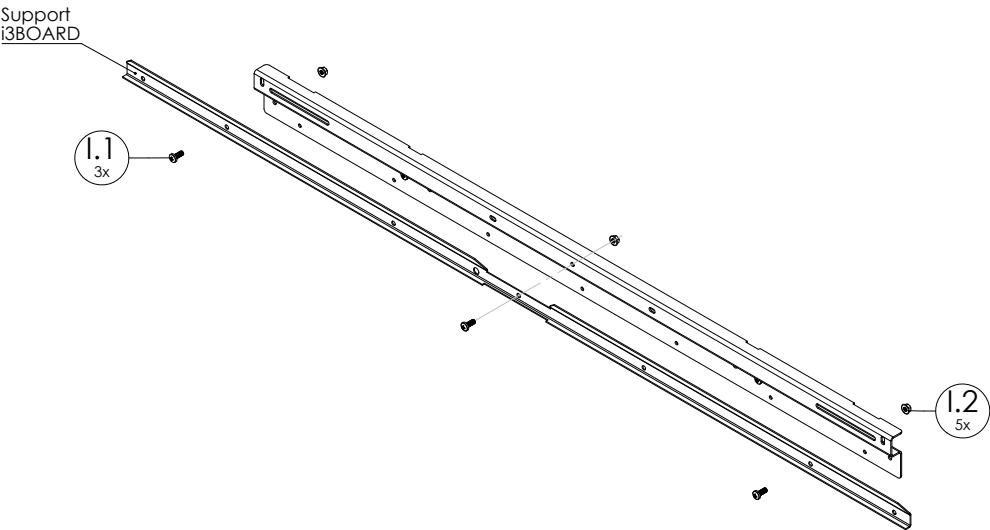
6.1 Mount the support of the projector with:

Hardware Bag (type A)/List (BS/A451011 - Projectorplate)

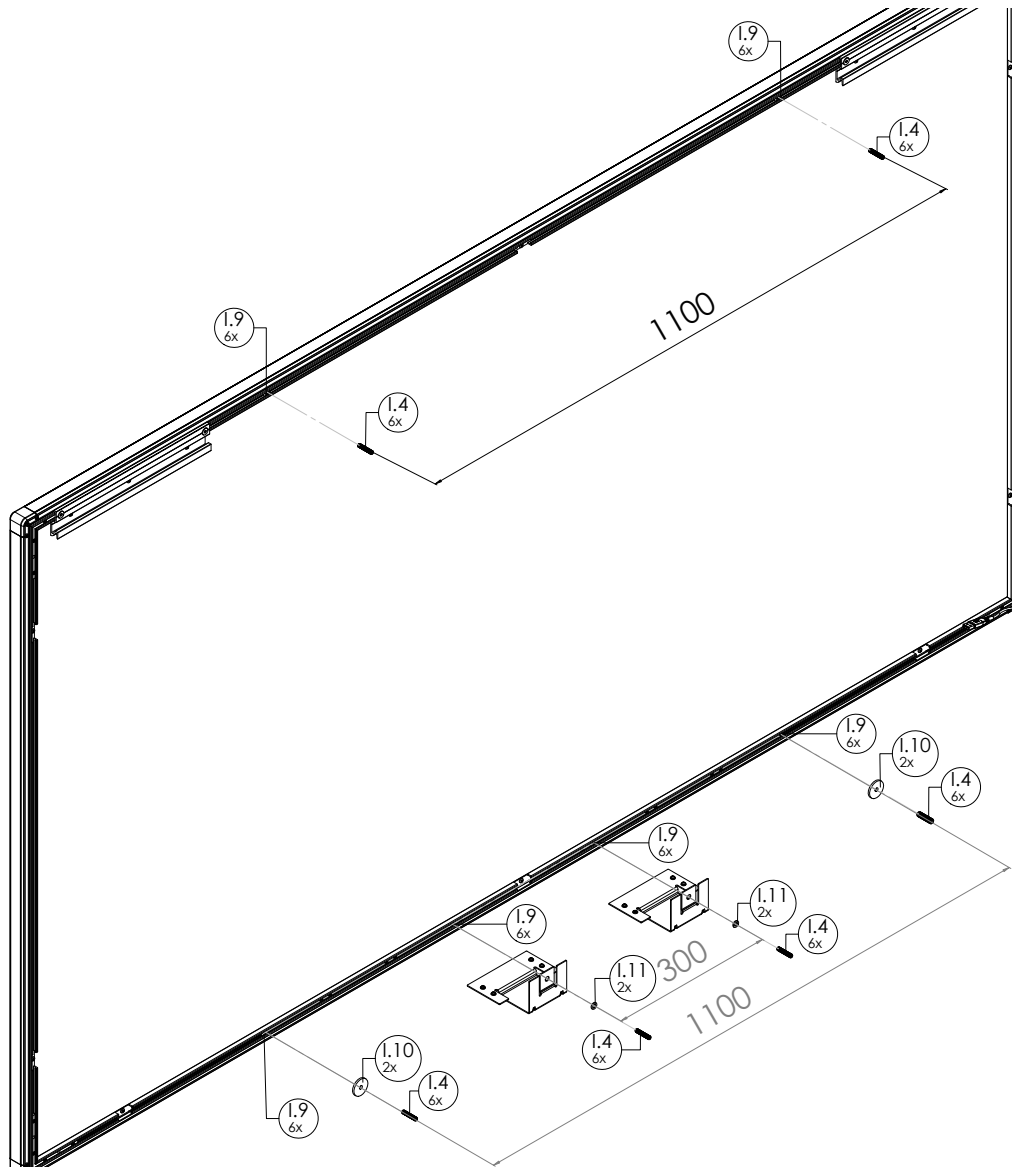
Id	V G Number	Q	Description	info
A.1	23/040192	4	Screw pan head crossM6x40	
A.2	23/090275	4	Flange nut M6	



Note: In case of i3BOARD (3th generation): preinstall first the board’s adapter bracket (supplied with the board) to the horizontal support adapter profile before installing all the support adapter profiles to the frame.



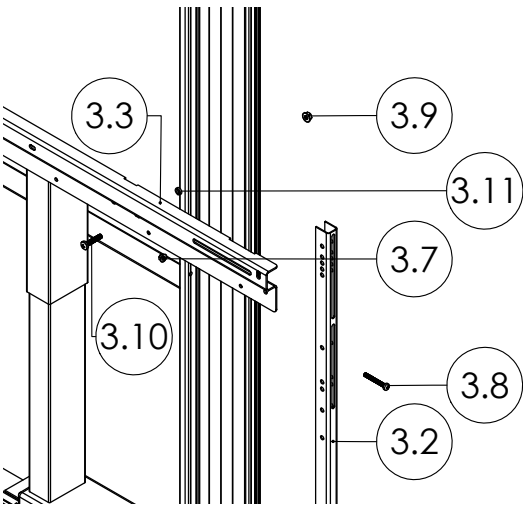
In case of i3BOARD (4th generation): preinstall as shown



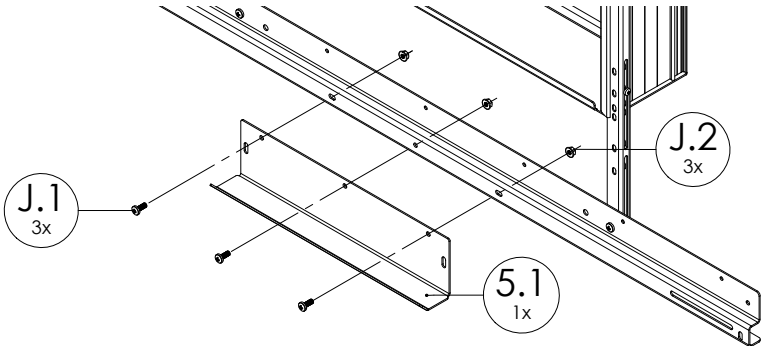
Hardware Bag (type B)/List (BS/A511011 - i3BOARD)

Id	V G Number	Q	Description	info
1.1	23/090347	3	Screw M6 x 16	
1.2	23/090275	5	Nut M6	
1.3	23/090404	2	Nut M6 low	
1.4	23/090421	4	Set screw M6 x 30	
1.5	07/090286	2	Spacer 6.3 x 15 x 15	
1.6	15/050847	2	Spacer 6 x 15 x 5	
1.7	23/090252	2	Spacer	
1.8	23/090408	2	Screw M4 x 20	
1.9	23/090432	6	Square nut M6	
1.10	23/090430	2	Anti loss washer 6 x 30 x 3	
1.11	23/090431	2	Anti loss washer 6 x 11 x 1,5	

6.2 Install the support adapter profiles to the frame.
 First the vertical ones and then the horizontal ones
 (See page 16 - 21 for bolt positions).



Note: Only for i3WHITEBOARD's Wi / Wi Plus



7. INSTALLATION ON WALL

7.1 Solid wall

Mount the frame against the wall minding the drilling pattern. (page 16 - 27)



OK

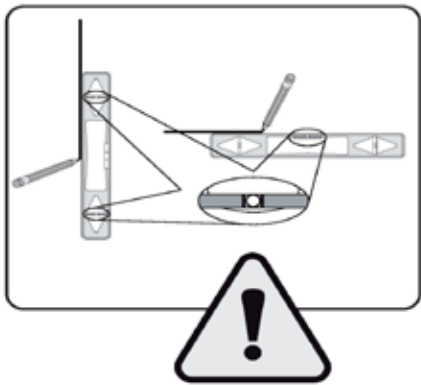


OK



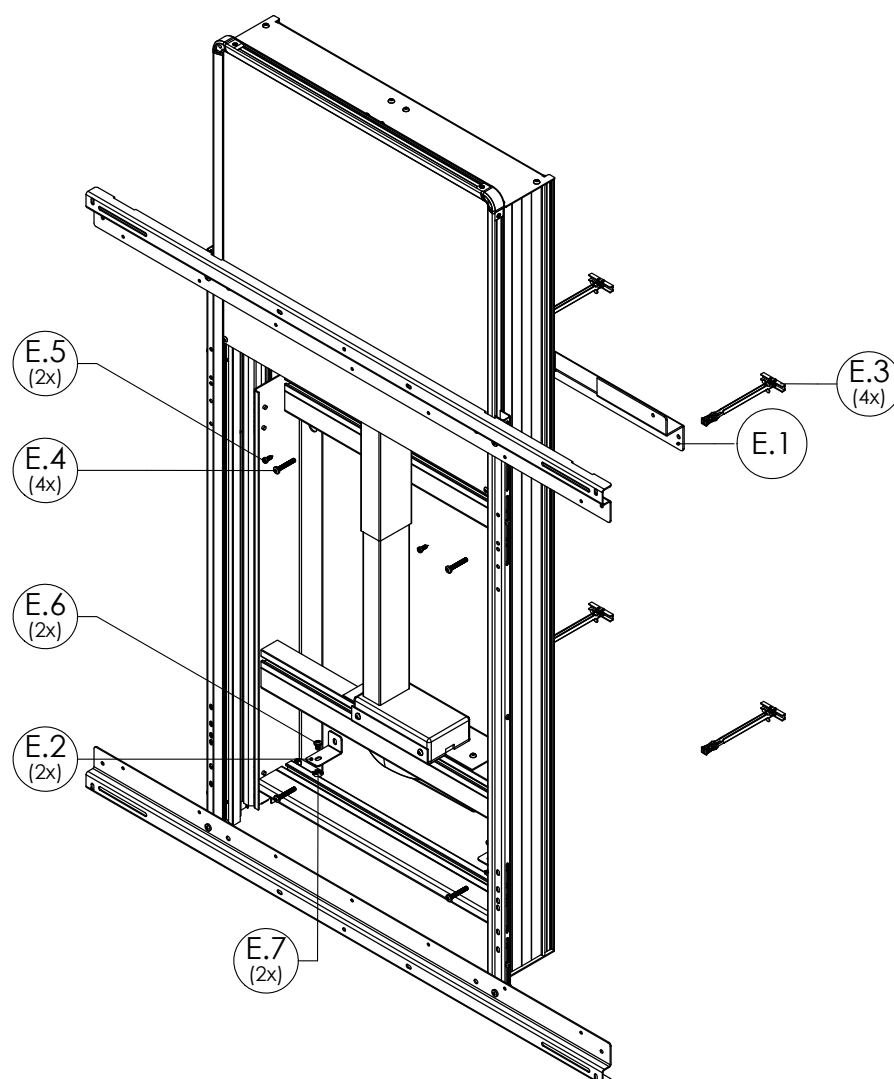
OK

Work subtle!



7.2 Stud wall

i3HAWM-E (Basic) + VSV0003437 mounting kit stud wall



Part list

Id	V G Number	Q	Description	info
E.1	BS/L57400X	1	Support STWL-kit	
E.2	BS/L57300X	2	Hook STWL-kit	

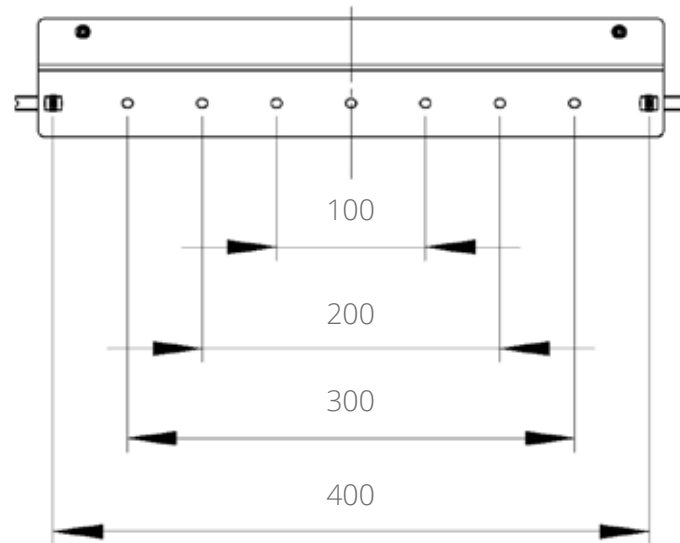
Hardware Bag(type E)/List (BS/A576010 Stud Wall)

Id	V G Number	Q	Description	info
E.3	23/090387	4	Toggler M6	
E.4	23/040192	4	Screw pan head cross M6x40	
E.5	23/040161	2	Screw pan head cross 4,8x16	
E.6	23/090298	2	Screw pan head cross M6x10	
E.7	23/090384	2	Hammer nut M6	

Note: Mounting the studwall-kit

Drill 2 holes \varnothing 13mm in the plasterwall and make sure that one of them is in a steel stud.

(Holes in the profile are positioned 15mm lower than those in the frame)



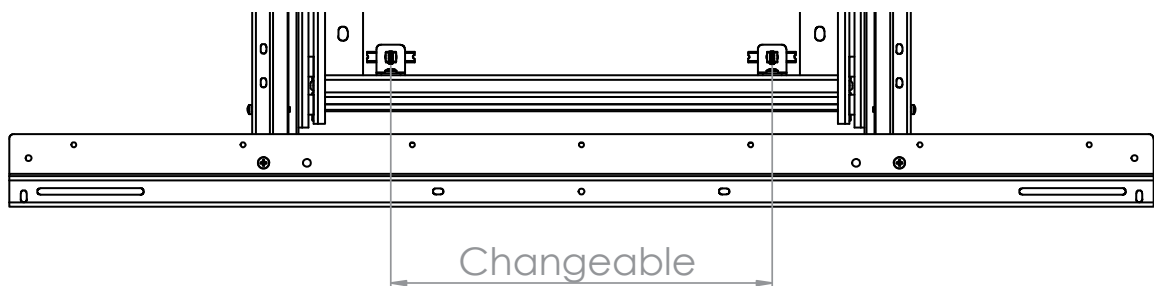
Fix the support to the wall with the 2 TOGLER plugs and screws.

Hang the frame on the support.

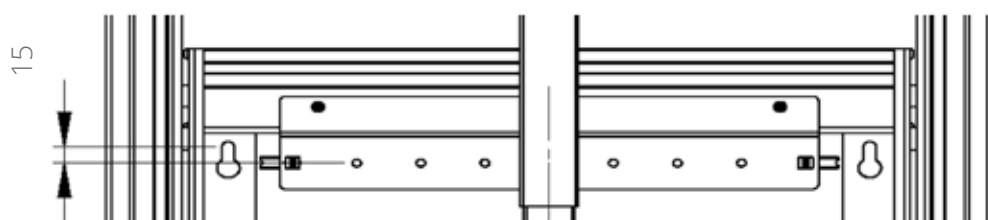
Drill 2 holes \varnothing 13mm below the frame, see drawing, also one in a steel stud

Fix the 2 brackets to the bottom of the frame using bolts and hammer nuts.

Fix the brackets to the wall be using TOGLER plugs and bolts.



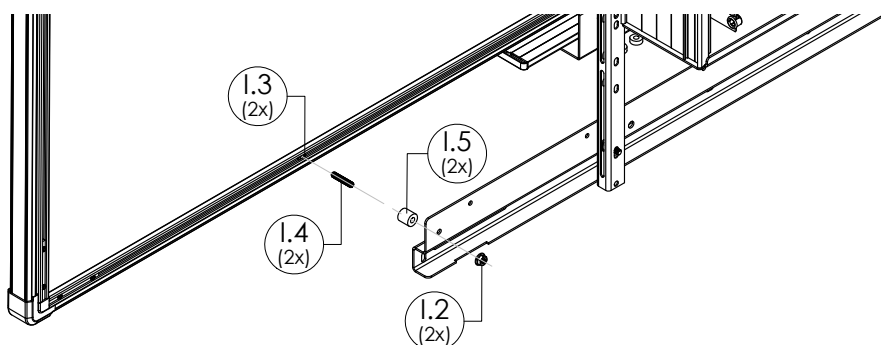
Drill 2 holes \varnothing 4mm through the holes of the support in the frame and fix them with screws 4,8x19mm



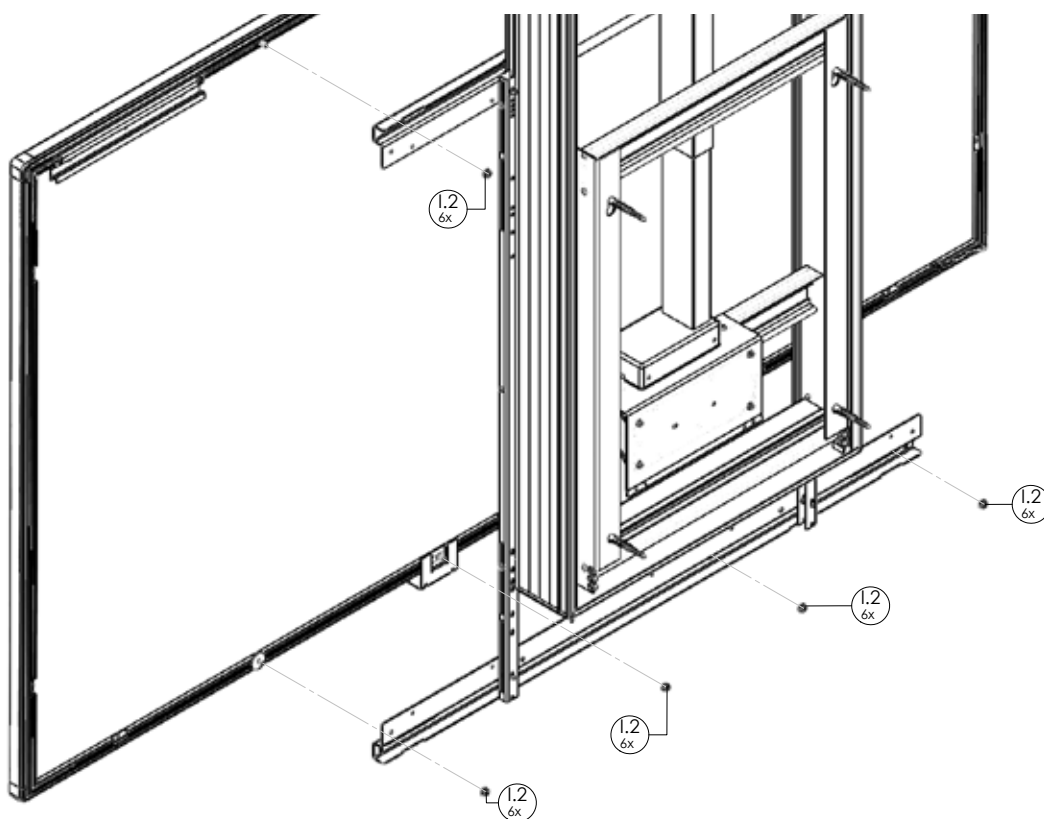
8. INSTALLATION i3BOARD

Hang the board on the frame and fix the board.

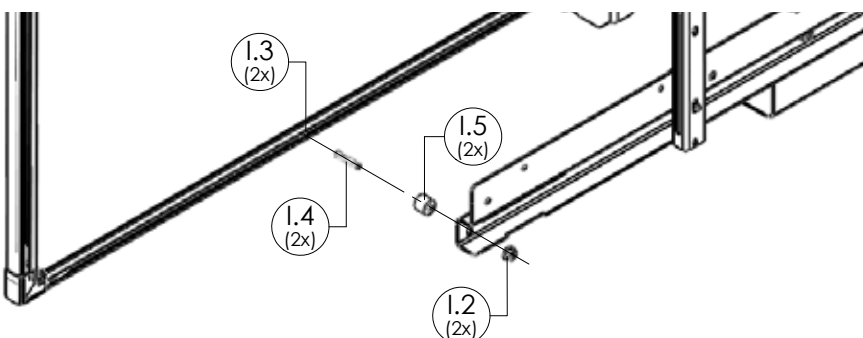
➡ For i3BOARD's (3th generation)



➡ For i3BOARD's (4th generation)

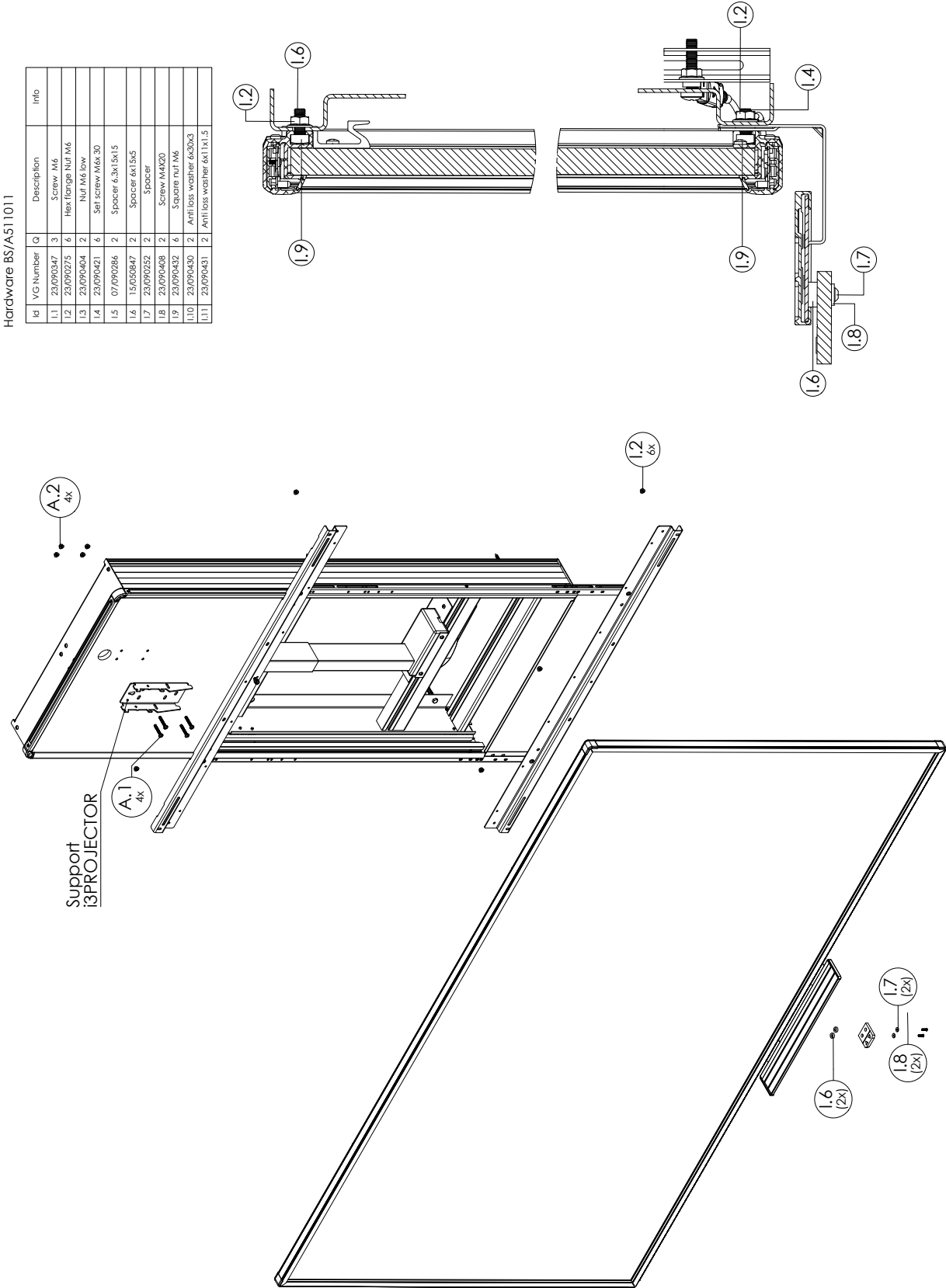


➡ For i3WHITEBOARD's Wi / Wi Plus

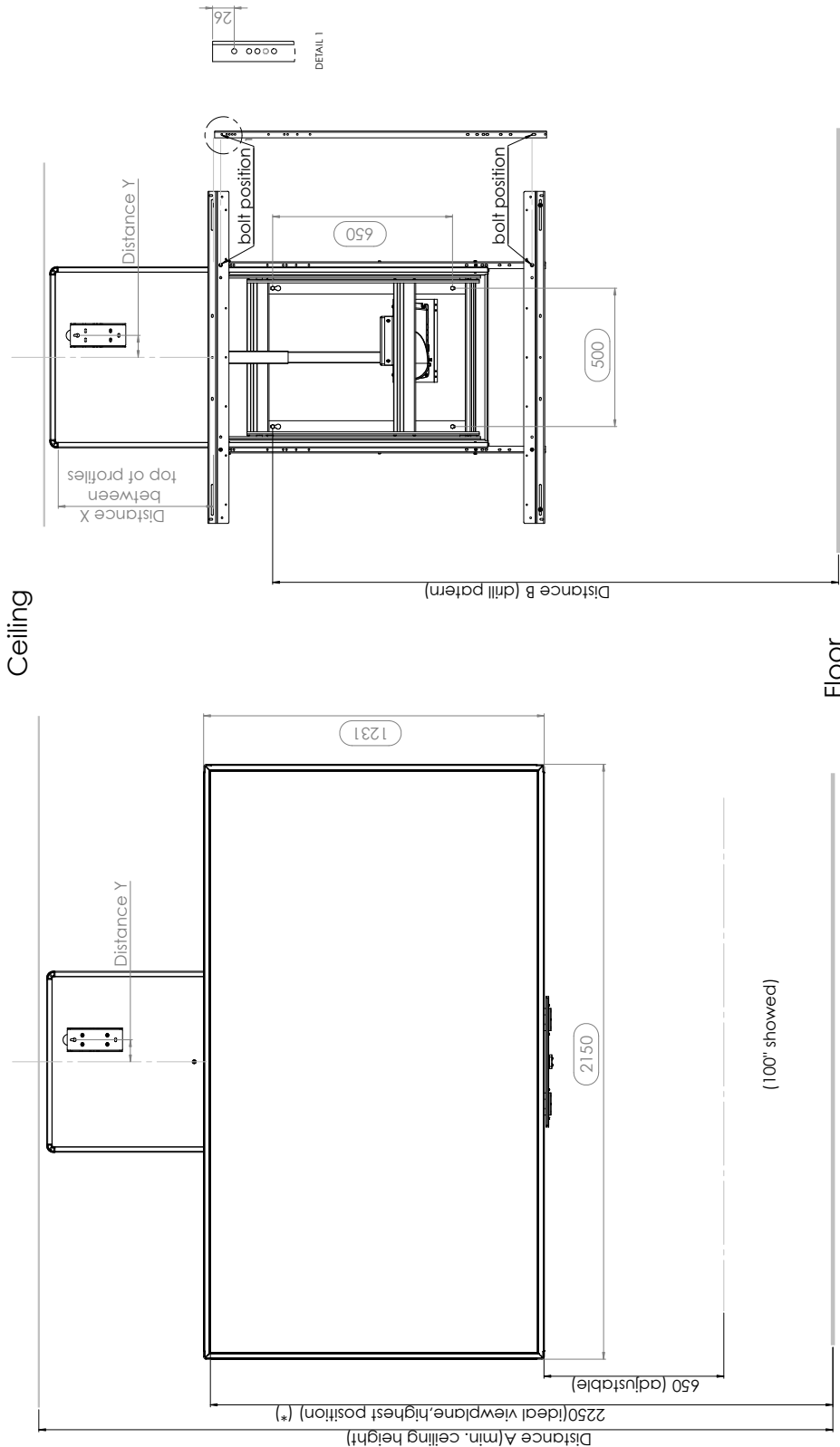


Hardware BS/A511011

Id	VG Number	Q	Description	Info
1.1	23/090347	3	Screw M6	
1.2	23/090275	6	Hex flange nut M6	
1.3	23/090404	2	Nut M6 low	
1.4	23/090421	6	Self screw M6x30	
1.5	07/090286	2	Spacer 6.3x1.5x1.5	
1.6	15/050847	2	Spacer 6x1.5x5	
1.7	23/090252	2	Spacer	
1.8	23/090408	2	Screw MAX20	
1.9	23/090432	6	Square nut M6	
1.10	23/090430	2	Anti loss washer 6x30x3	
1.11	23/090431	2	Anti loss washer 6x11x1.5	



ries)

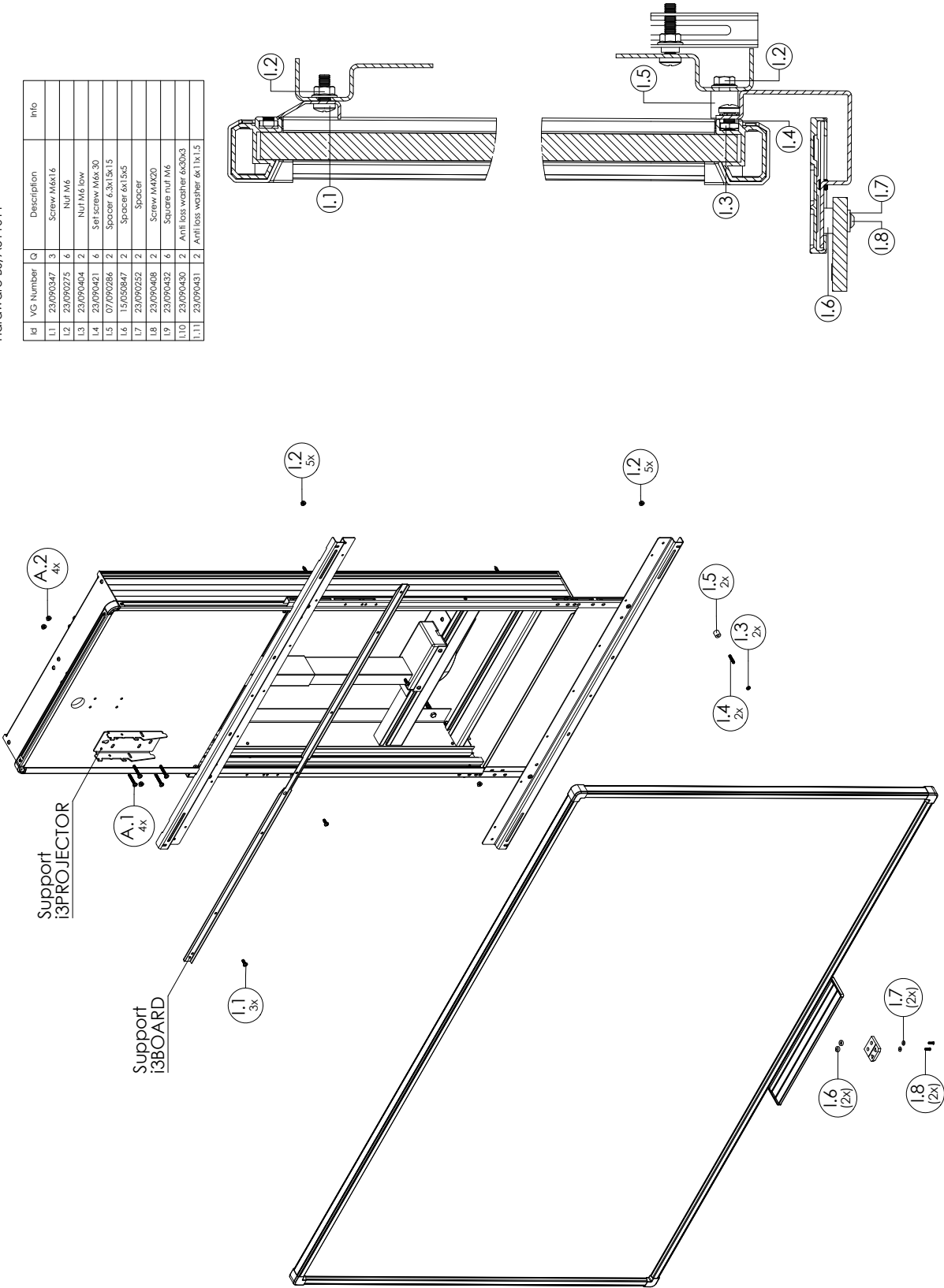


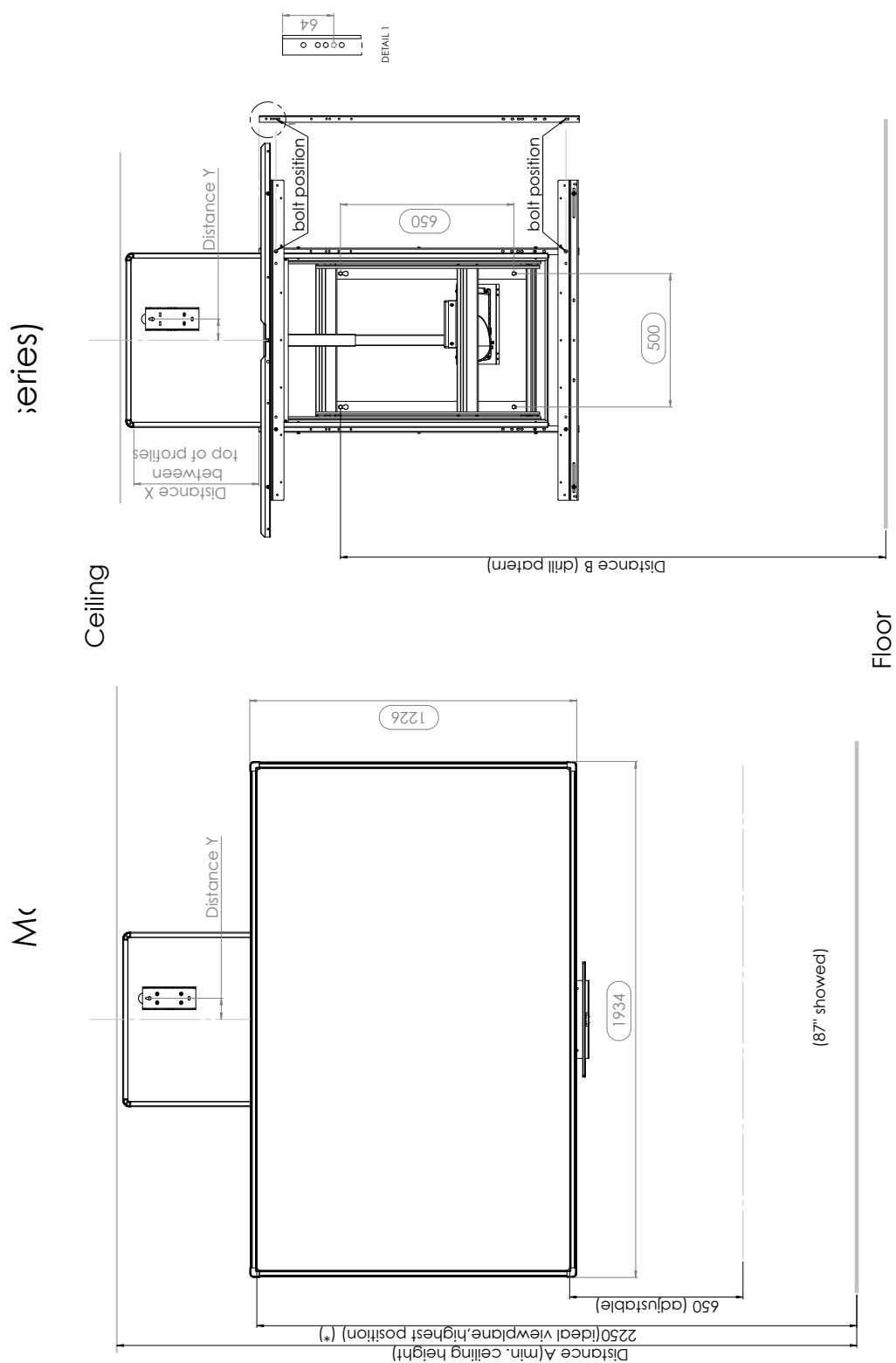
(*) = adapt the height according to local situation

Board	Projector	Distance A	Distance B	Distance X	Distance Y	Ideal Viewplane
i3BOARD 8704 T10	3303W	2820mm	1995mm	510mm	80mm	2250mm
i3BOARD 8704 T10	L3502W	2785mm	1960mm	475mm	80mm	2250mm
i3BOARD 10004 T10	3303W	2910mm	2085mm	600mm	80mm	2250mm
i3BOARD 10004 T10	L3302FHD	2830mm	2005mm	520mm	80mm	2250mm
i3BOARD 10004 T10 100° Duo	L3502W	2870mm	2045mm	560mm	80mm	2250mm

Hardware BS/A511011

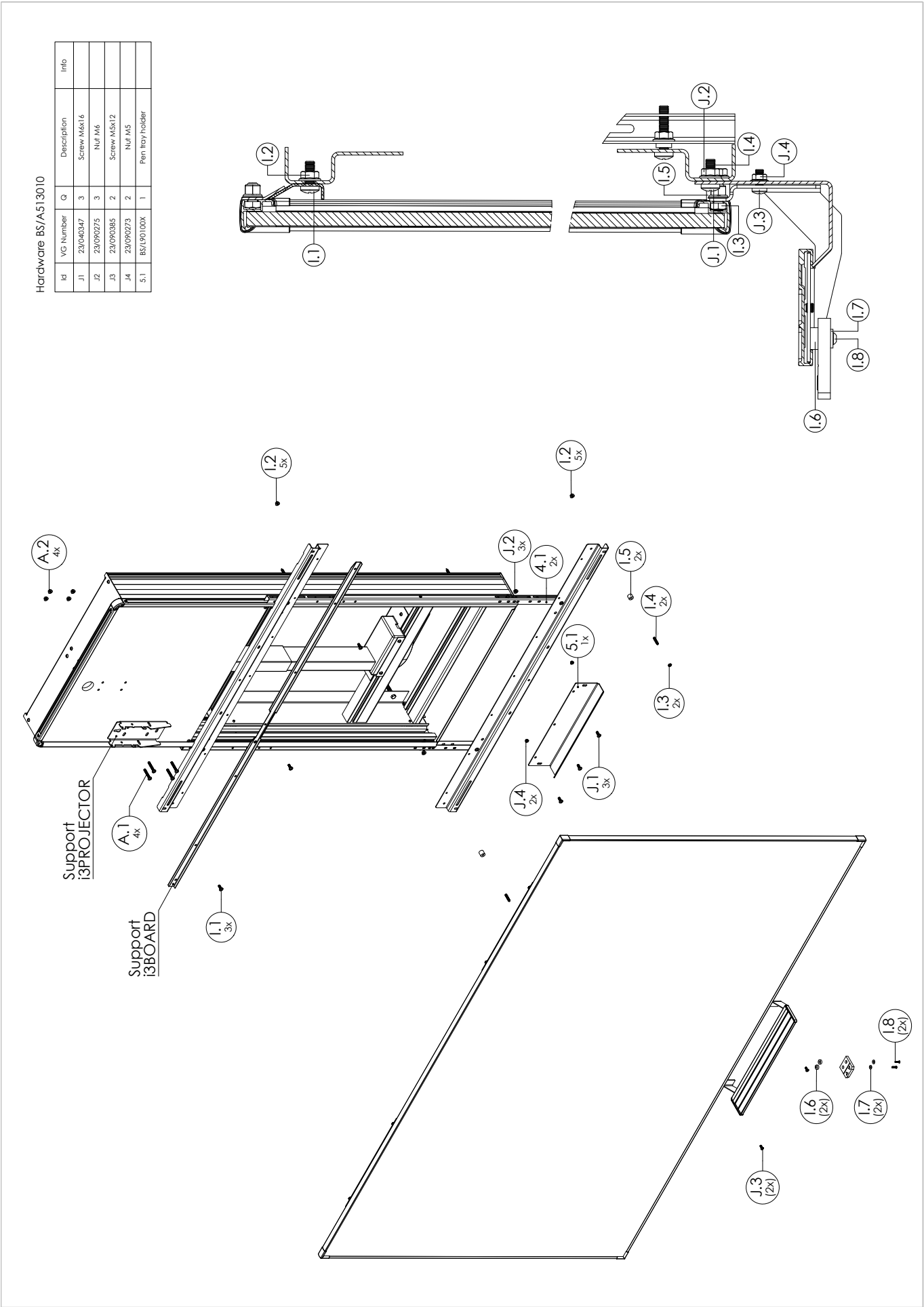
Id	VG Number	Q	Description	Info
I.1	23/090347	3	Screw M6x16	
I.2	23/090275	6	Nut M6	
I.3	23/090404	2	Nut M6 low	
I.4	23/090421	6	Self screw M6x30	
I.5	07/090286	2	Spacer 6.3x15x15	
I.6	15/050847	2	Spacer 6x15x5	
I.7	23/090252	2	Spacer	
I.8	23/090408	2	Screw M4x20	
I.9	23/090432	6	Square nut M6	
I.10	23/090430	2	Anti loss washer 6x20x3	
I.11	23/090431	2	Anti loss washer 6x11x1.5	

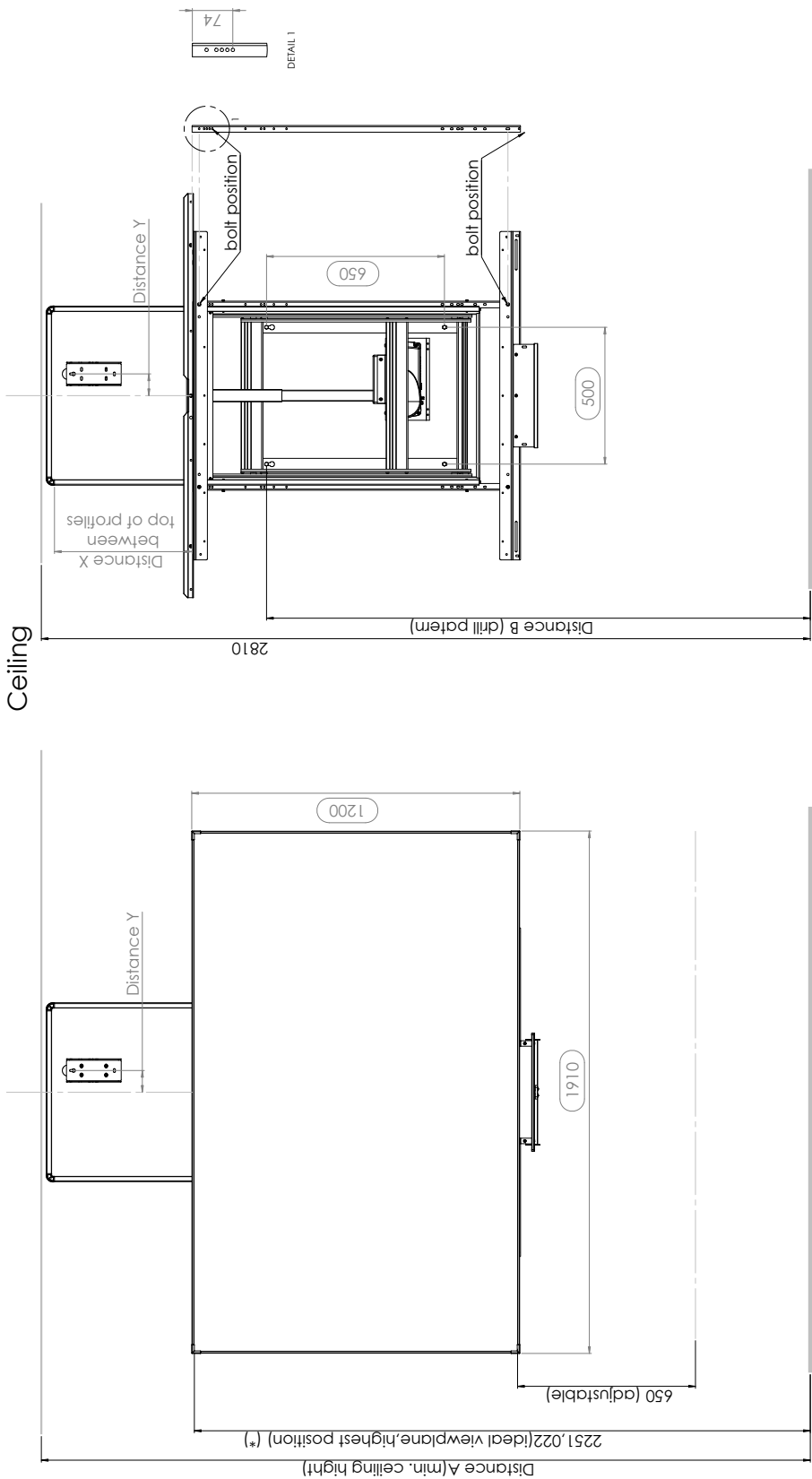




(*)= adapt the height according to local situation

Board	Projector	Distance A	Distance B	Distance X	Distance Y	Idea Viewplane
3BOARD 7703 106	3303W	2810mm	1980mm	505mm	80mm	2250mm
3BOARD 7703 106	L3502W	2775mm	1945mm	470mm	80mm	2250mm
3BOARD 8703 106	3303W	2810mm	1980mm	505mm	80mm	2250mm
3BOARD 8703 106	L3502W	2775mm	1945mm	470mm	80mm	2250mm



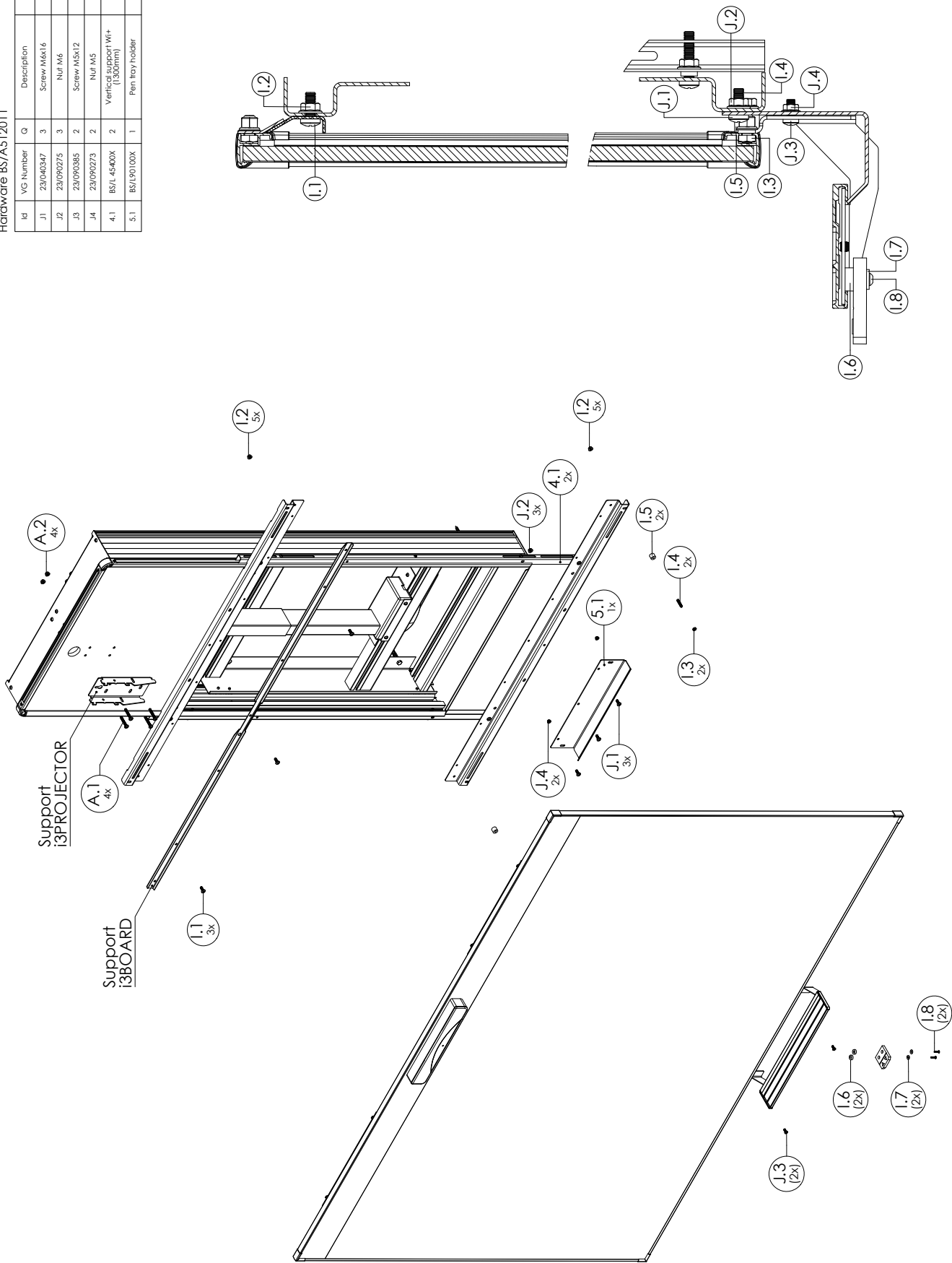


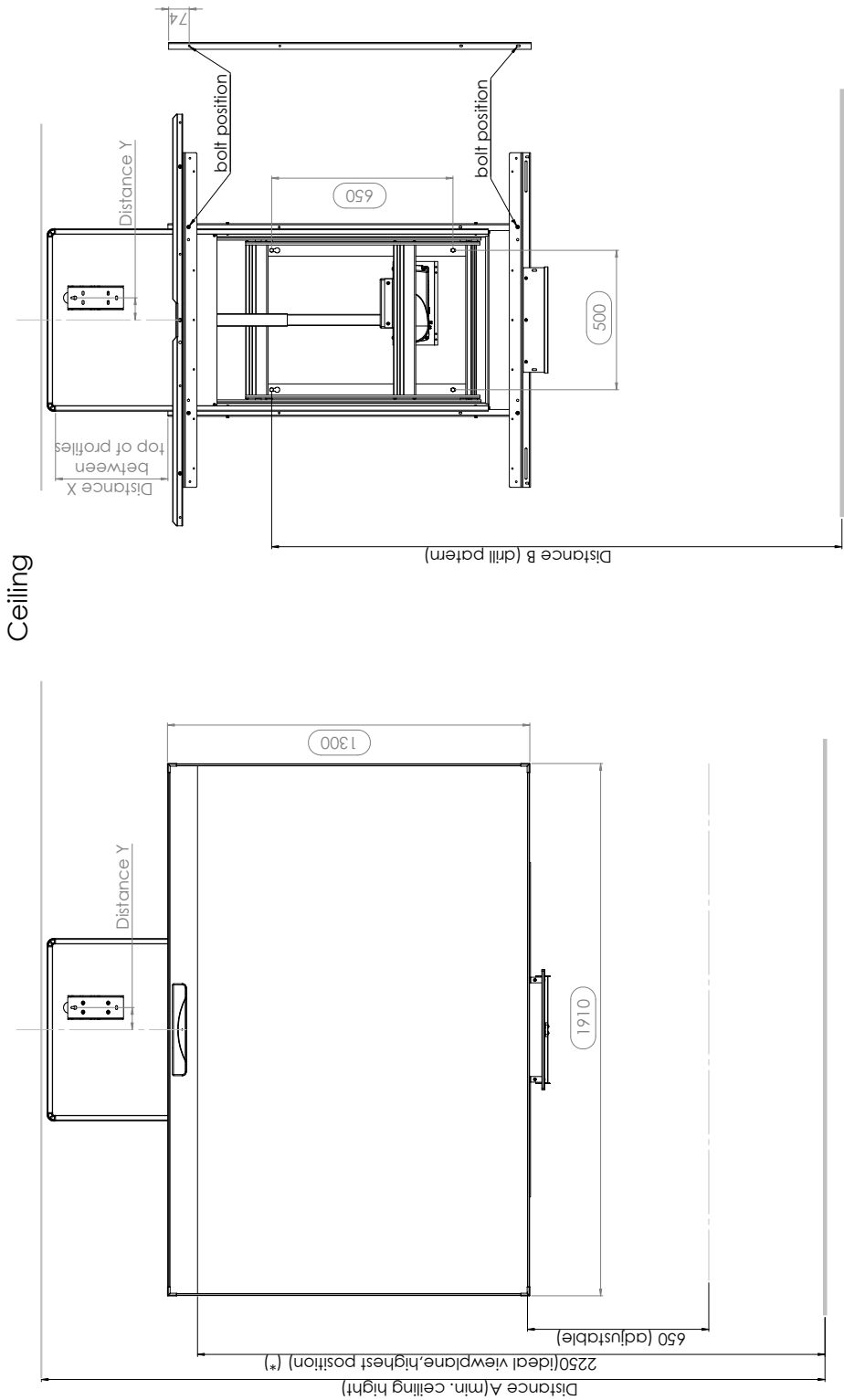
(*) = adapt the height according to local situation

Board	Projector	Distance A	Distance B	Distance X	Distance Y	Ideal Viewplane
i3WHITEBOARD Wi 87" Duo	3303Wi	2800mm	1980mm	500mm	80mm	2250mm

Hardware BS/A512011

Id	VG Number	Q	Description	Info
J1	23/040347	3	Screw M6x16	
J2	23/090275	3	Nut M6	
J3	23/090385	2	Screw M5x12	
J4	23/090273	2	Nut M5	
4.1	BS/L 45400X	2	Vertical support Wi+ (158mm)	
5.1	BS/L90100X	1	Pen tray holder	



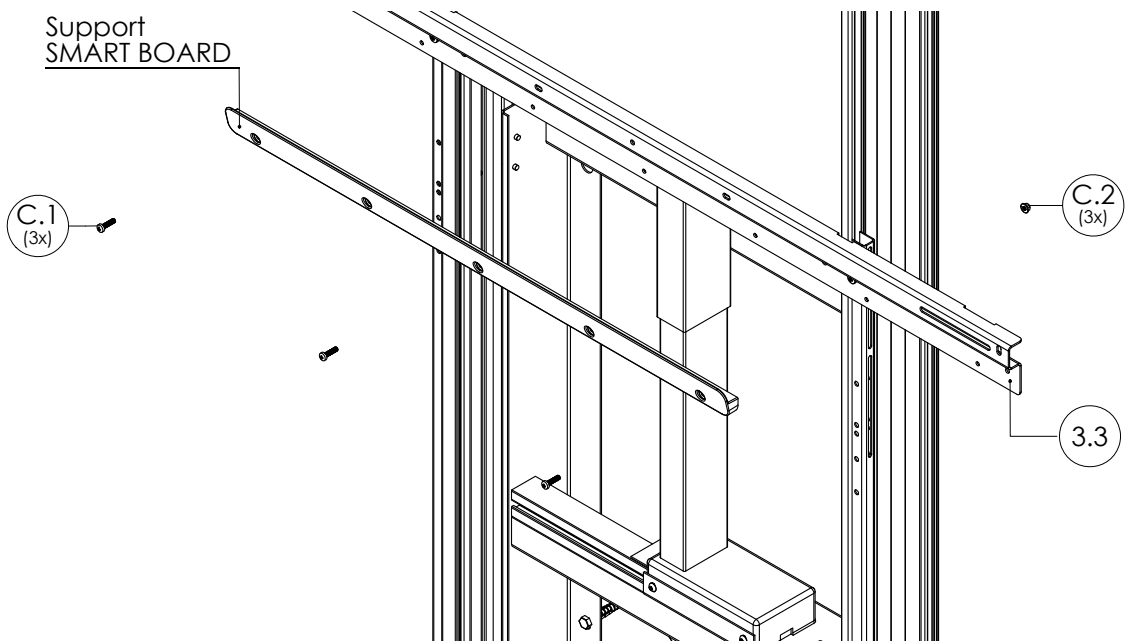


(*) = adapt the height according to local situation

Board	Projector	Distance A	Distance B	Distance X	Distance Y	Ideal Viewplane
i3WHITEBOARD Wi Plus 87"	3303Wi	2810mm	2045mm	405mm	80mm	2250mm

9. INSTALLATION SMART BOARD

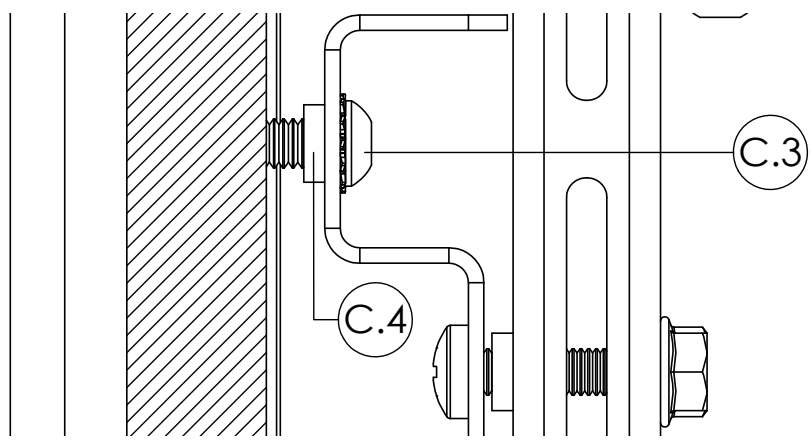
Mount the plastic bracket against the upper horizontal wall mount’s adapter profile

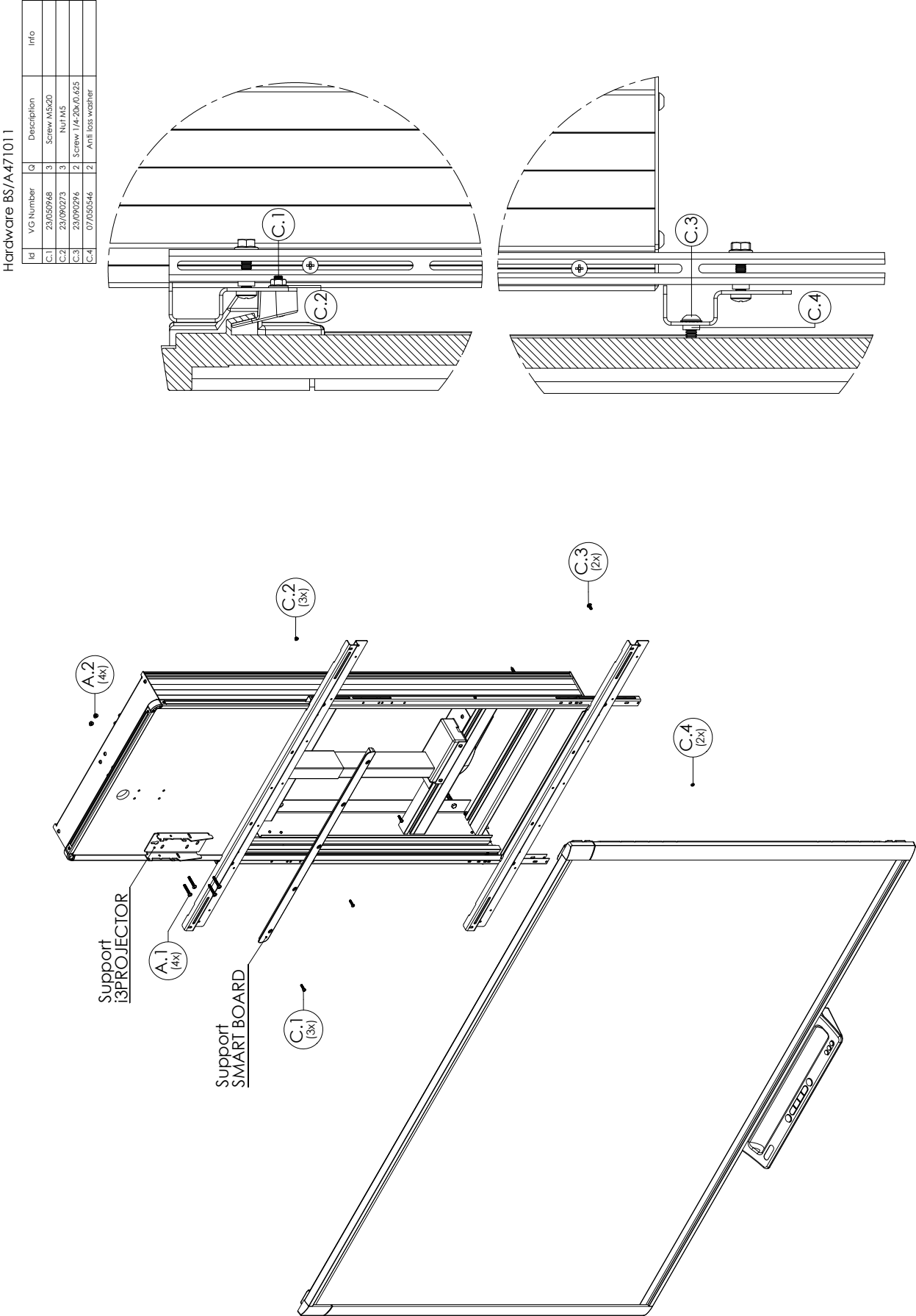


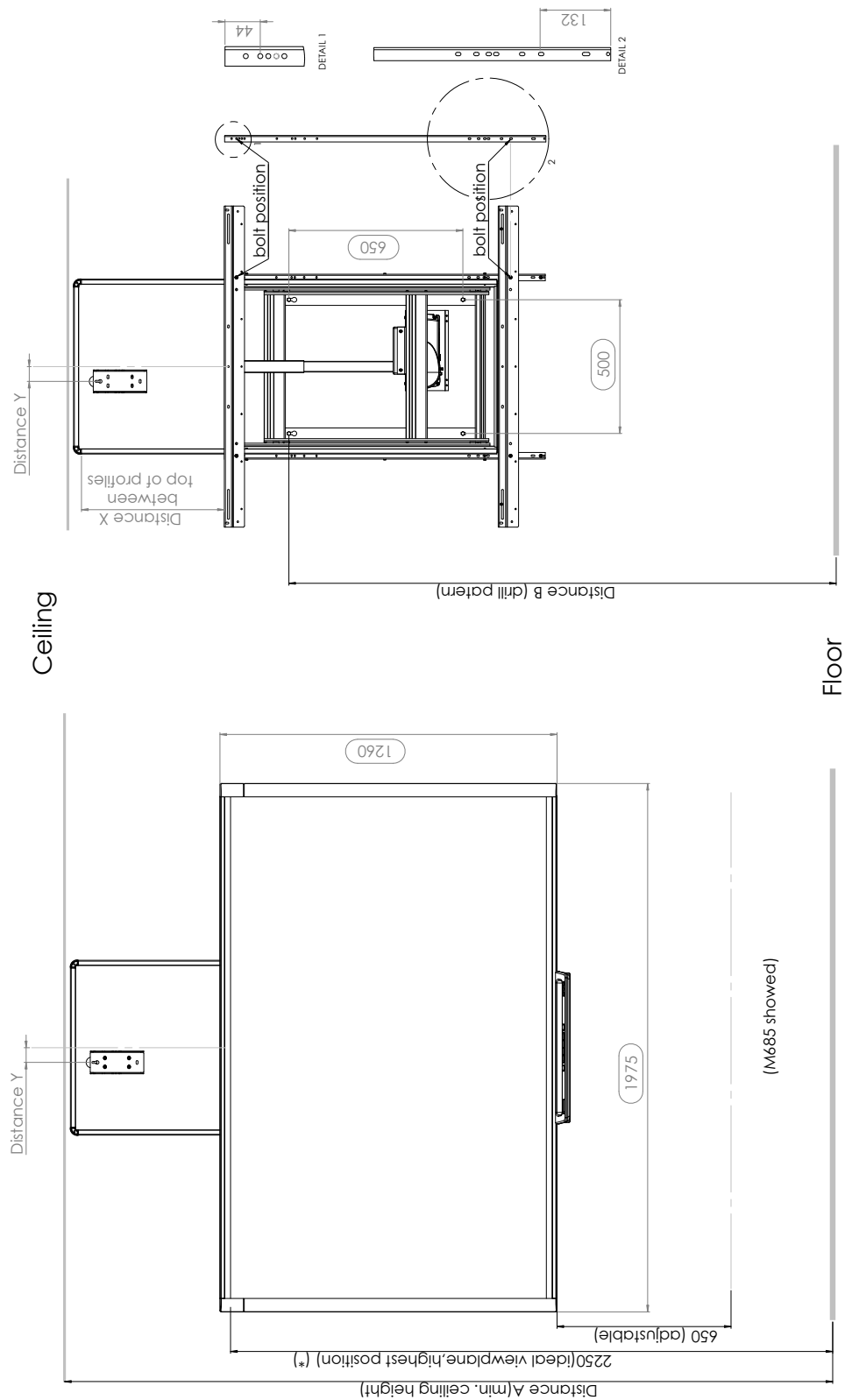
Hardware Bag (type C)/List (BS/A471011 - SMART)

Id	V G Number	Q	Description	info
C.1	23/050968	3	Screw pan head cross M5x20	
C.2	23/090273	3	Flange nut M5	
C.3	23/090296	2	Hex socket button head 1/4-20x0.625	
C.4	07/050546	2	Anti loss washer	

Use the standard SMART inserts





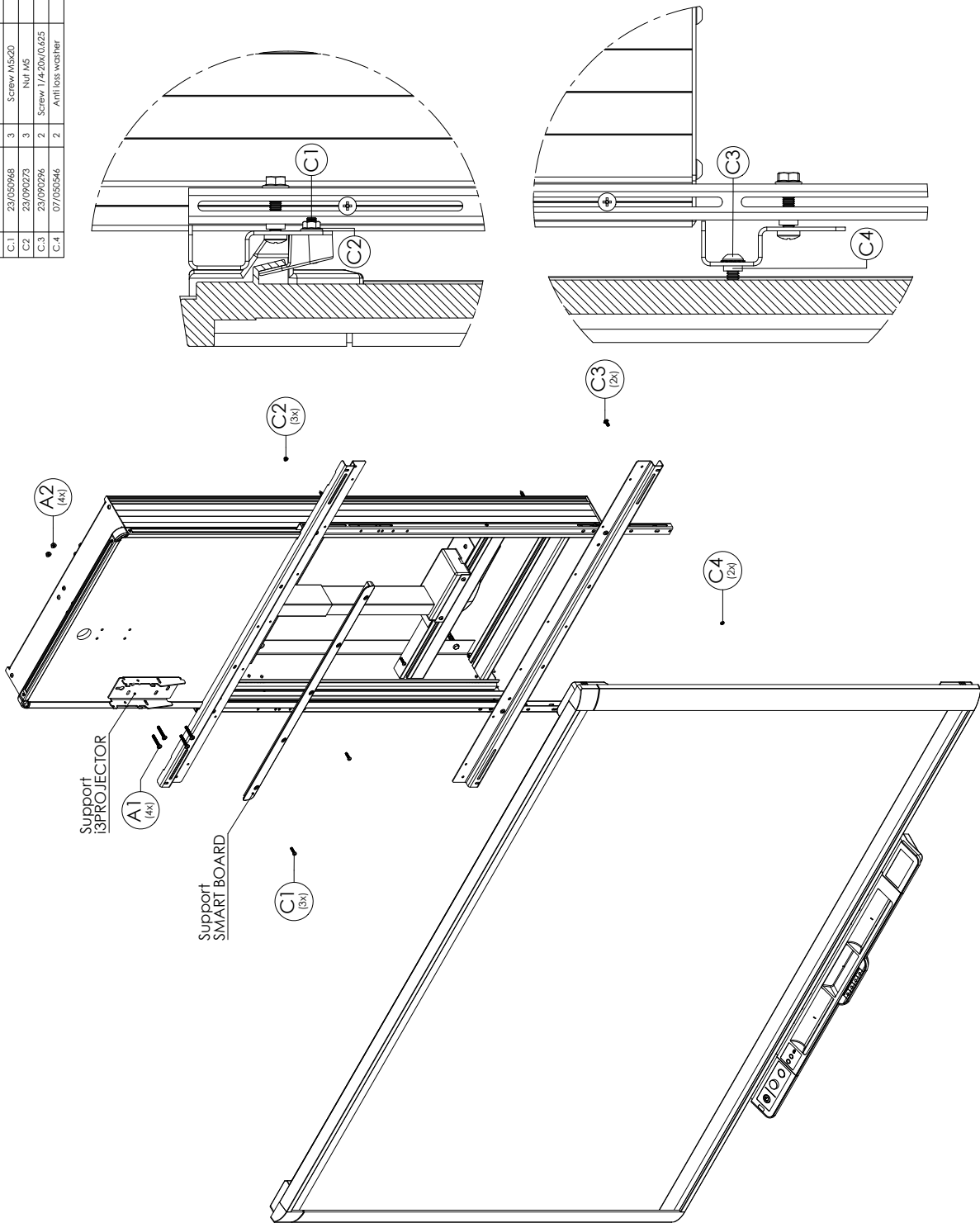


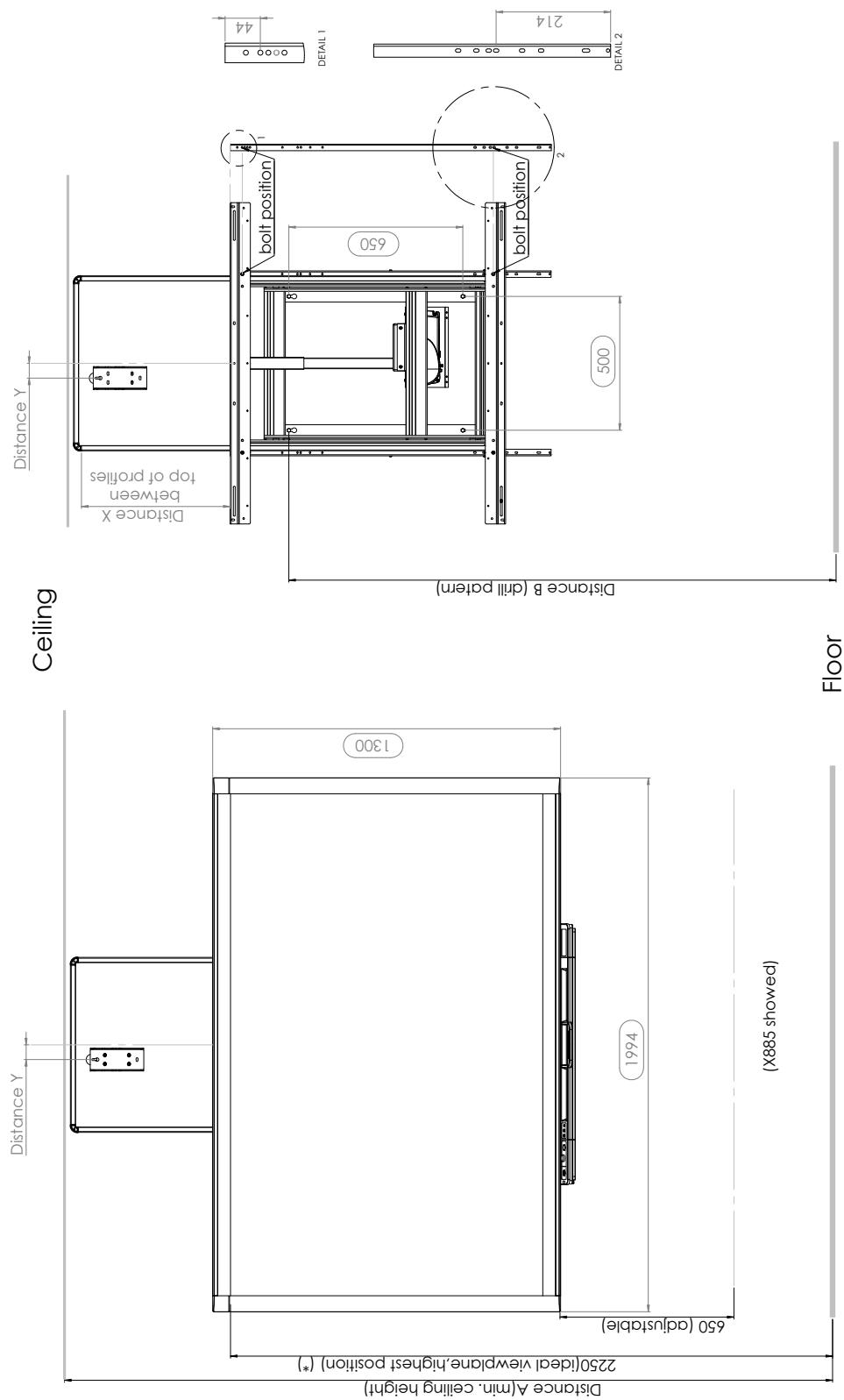
Board	Projector	Distance A	Distance B	Distance X	Distance Y	Ideal Viewplane
SMART BOARD M 680	2402W/2802W	2870mm	2045mm	533mm	55mm (left)	2250mm
SMART BOARD M 680	13502W	2775mm	1970mm	458mm	-80mm (right)	2250mm
SMART BOARD M 685	2402W/2802W	2870mm	2045mm	533mm	55mm (left)	2250mm
SMART BOARD M 685	13502W	2775mm	1970mm	458mm	-80mm (right)	2250mm

(*) = adapt the height according to local situation

Hardware BS/A471011

Id	VG Number	Q	Description	Info
C.1	23/050948	3	Screw M5x20	
C.2	23/090273	3	Nut M5	
C.3	23/090296	2	Screw 1/4-20x0.625	
C.4	07/050546	2	Anti loss washer	





Board	Projector	Distance A	Distance B	Distance X	Distance Y	Ideal Viewplane
SMART BOARD X880	2402W/2802W	2870mm	2045mm	555mm	55mm (left)	2250mm
SMART BOARD X880	13502W	2775mm	1970mm	480mm	-80mm (right)	2250mm
SMART BOARD X885	2402W/2802W	2870mm	2045mm	555mm	55mm (left)	2250mm
SMART BOARD X885	13502W	2775mm	1970mm	480mm	-80mm (right)	2250mm

(*) = adapt the height according to local situation

[illegible]

[illegible]

AUTHORISED DISTRIBUTOR



WWW.I3-TECHNOLOGIES.COM
INFO@I3-TECHNOLOGIES.COM